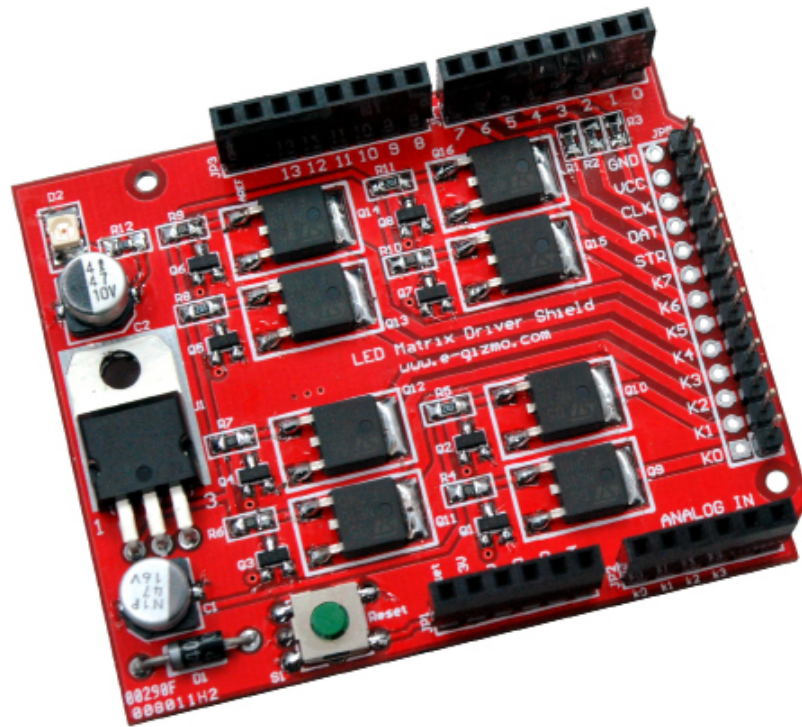


LED Matrix Common Cathode Driver Shield

Hardware Manual Rev 1r0



Used in conjunction with our gizDuino (Arduino compatible) controller and LED dot matrix display kit to build a full function LED dot matrix display system.

FEATURES & SPECIFICATIONS

- Capable of driving up to 5 Led Matrix Board (4 ft)
- gizDuino & Arduino microcontroller Compatible Shield.
- PCB Size: 66Lx58Wx19Hmm

MAJOR COMPONENTS PRESENTATION

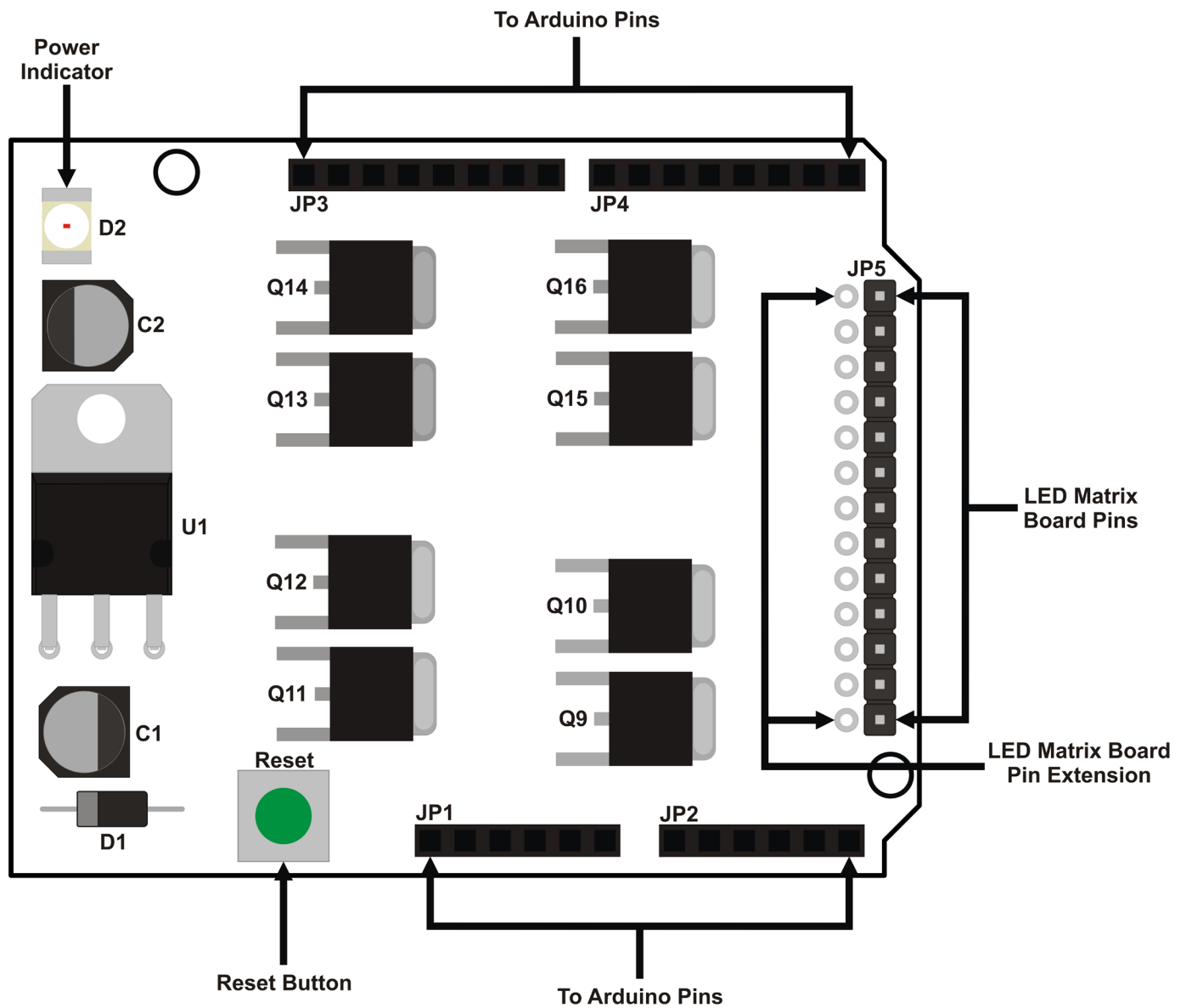


Figure 1. LED Matrix Controller Shield and its major components.

PIN ASSIGNMENTS

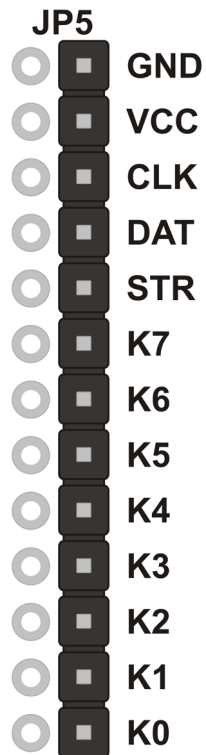


Figure 2. JP3 Pin Assignments.

Table 1. JP3 Pin Details.

Pin No.	Pin I.D.	Description
13	GND	Ground.
12	VCC	Supply Voltage
11	CLK	I/O Clock
10	DAT	Data Out
9	STR	Strobe
8	K7	I/O
7	K6	I/O
6	K5	I/O
5	K4	I/O
4	K3	I/O
3	K2	I/O
2	K1	I/O
1	K0	I/O

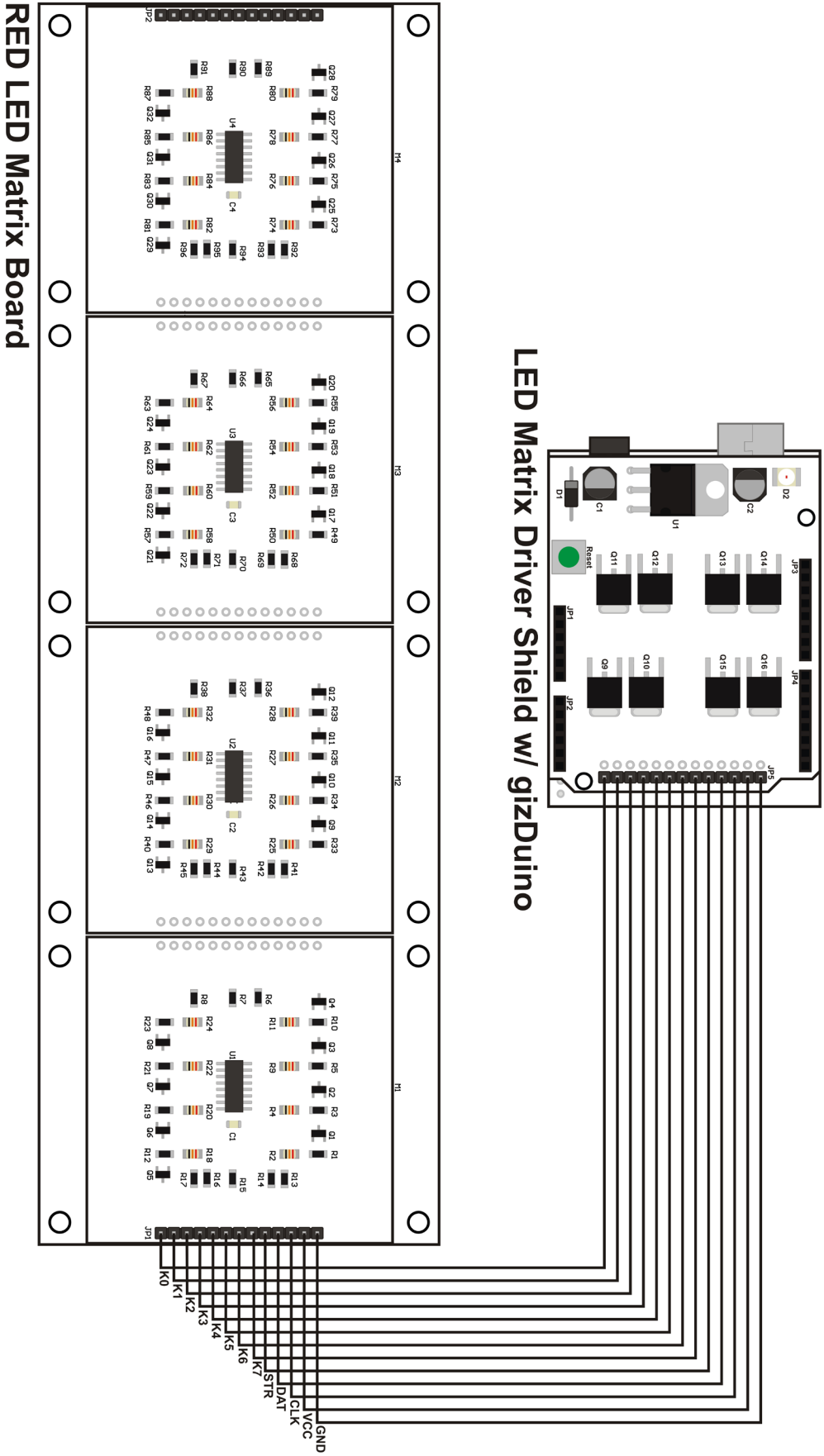


Figure 3. Illustration of LED Matrix Common Cathode Driver Shield. attached to gizduino & connected to e-Gizmo's "Red LED Matrix Board".

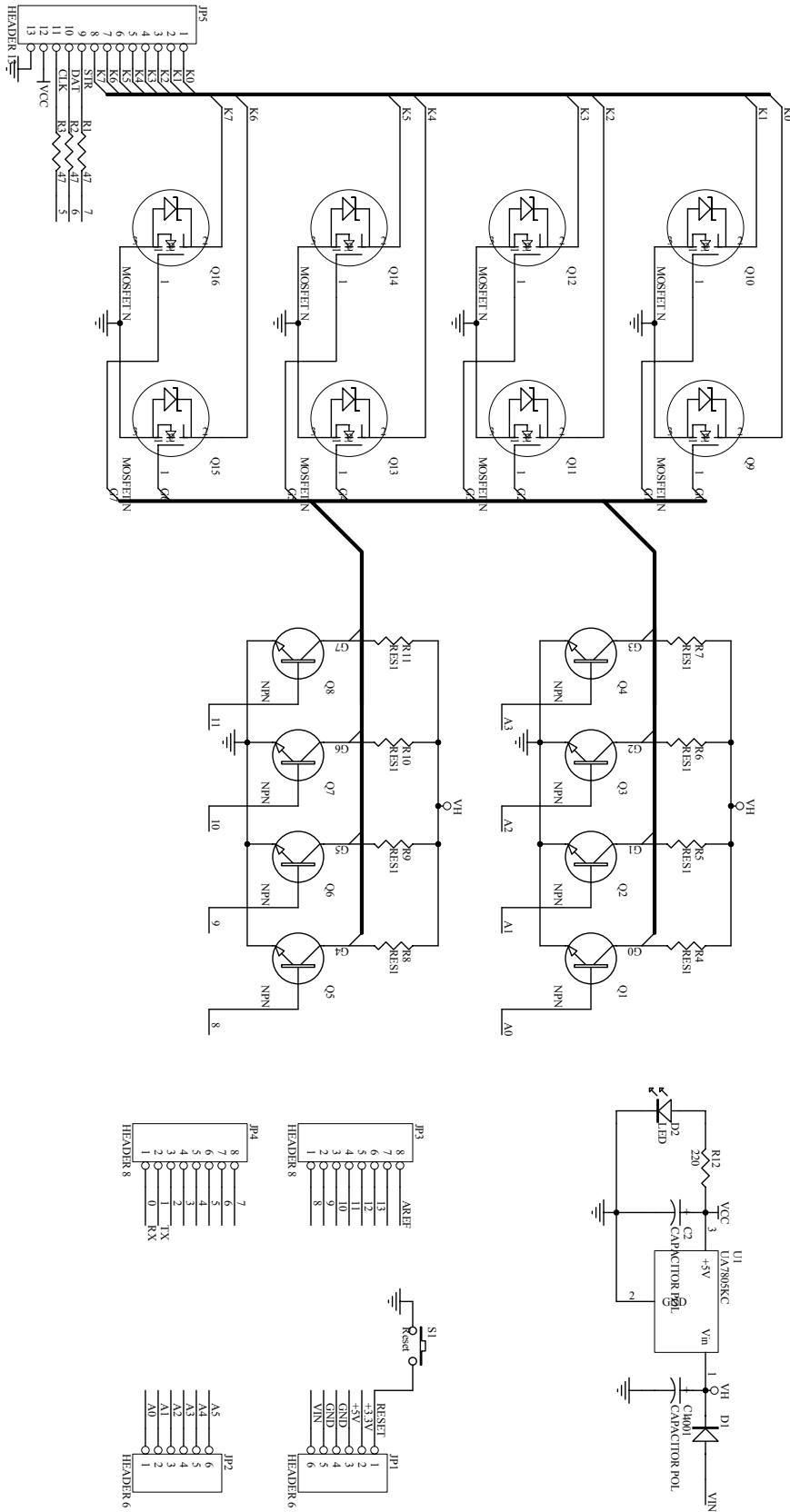


Figure 4. Schematic Diagram of LED Matrix Common Cathode Driver Shield.

PCB BOARD PRESENTATION

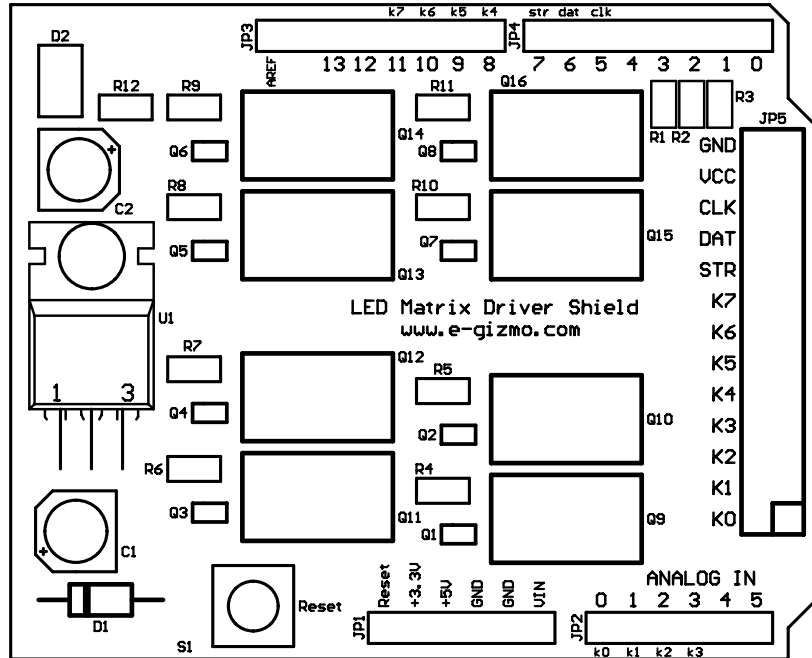


Figure 5. LED Matrix Common Cathode Driver Shield PCB (silkscreen layout)

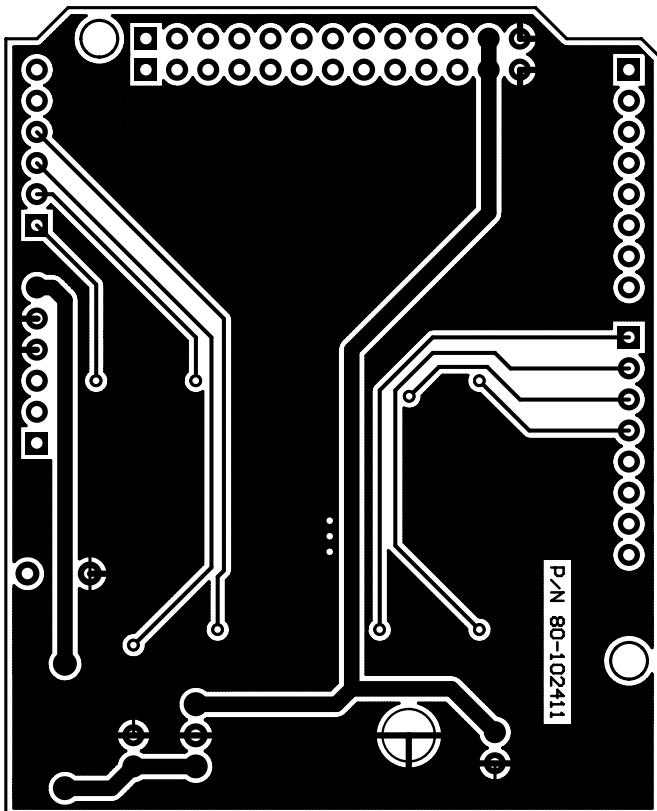


Figure 6. LED Matrix Common Cathode Driver Shield PCB Copper Pattern (Bottom Layer)

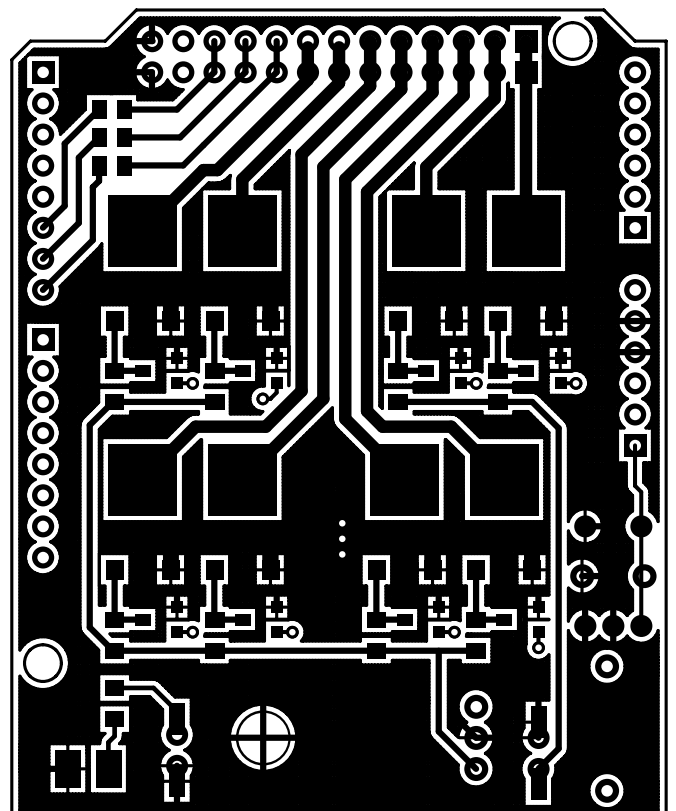


Figure 7. LED Matrix Common Cathode Driver Shield PCB Copper Pattern (Top Layer)