

4 Digit Display v2.0

Technical Manual Rev 1r0



FEATURES & SPECIFICATIONS

The e-Gizmo 4 Digits Display Version 2.0 used LD1207 (IC) that have 3 Linear-Data-Interface. Specifically design for LED Display. It is easy to control for numeric display and adjustable brightness control. Compatible in all Gizduino kits.

FEATURES & SPECIFICATIONS

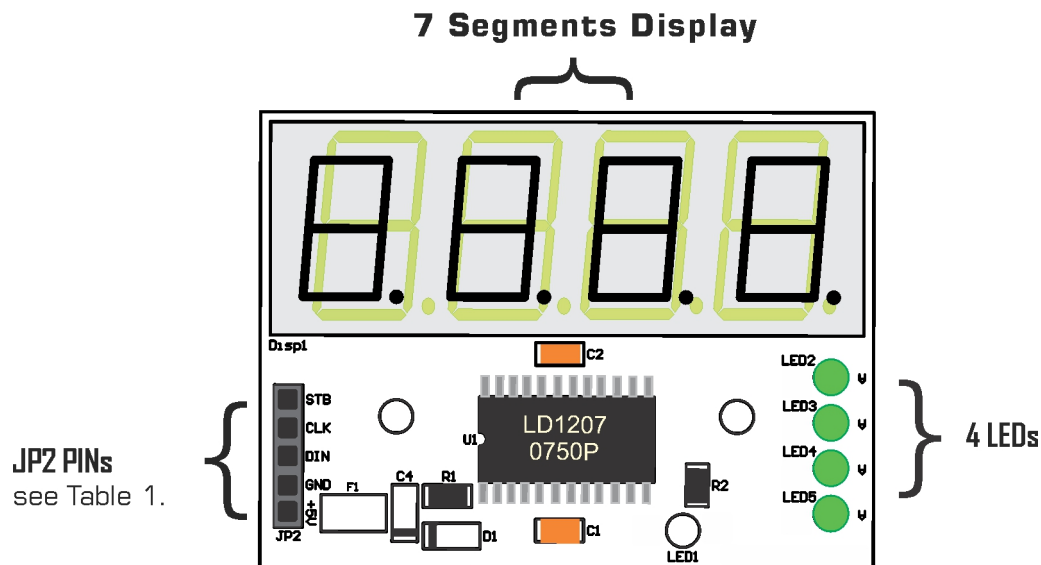


Figure 1. 4 Digits Display v2.0

Table 1. JP2 Pins Descriptions

PIN I.D	DESCRIPTIONS
STB	Strobe Pins
CLK	Clock
DIN	Data Input
GND	Ground
+5V	Supply Voltage(Vcc)

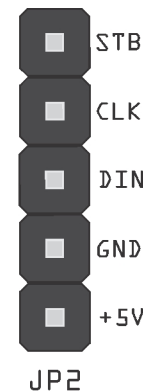


Figure 2. PIN Assignments



SCHEMATIC DIAGRAM

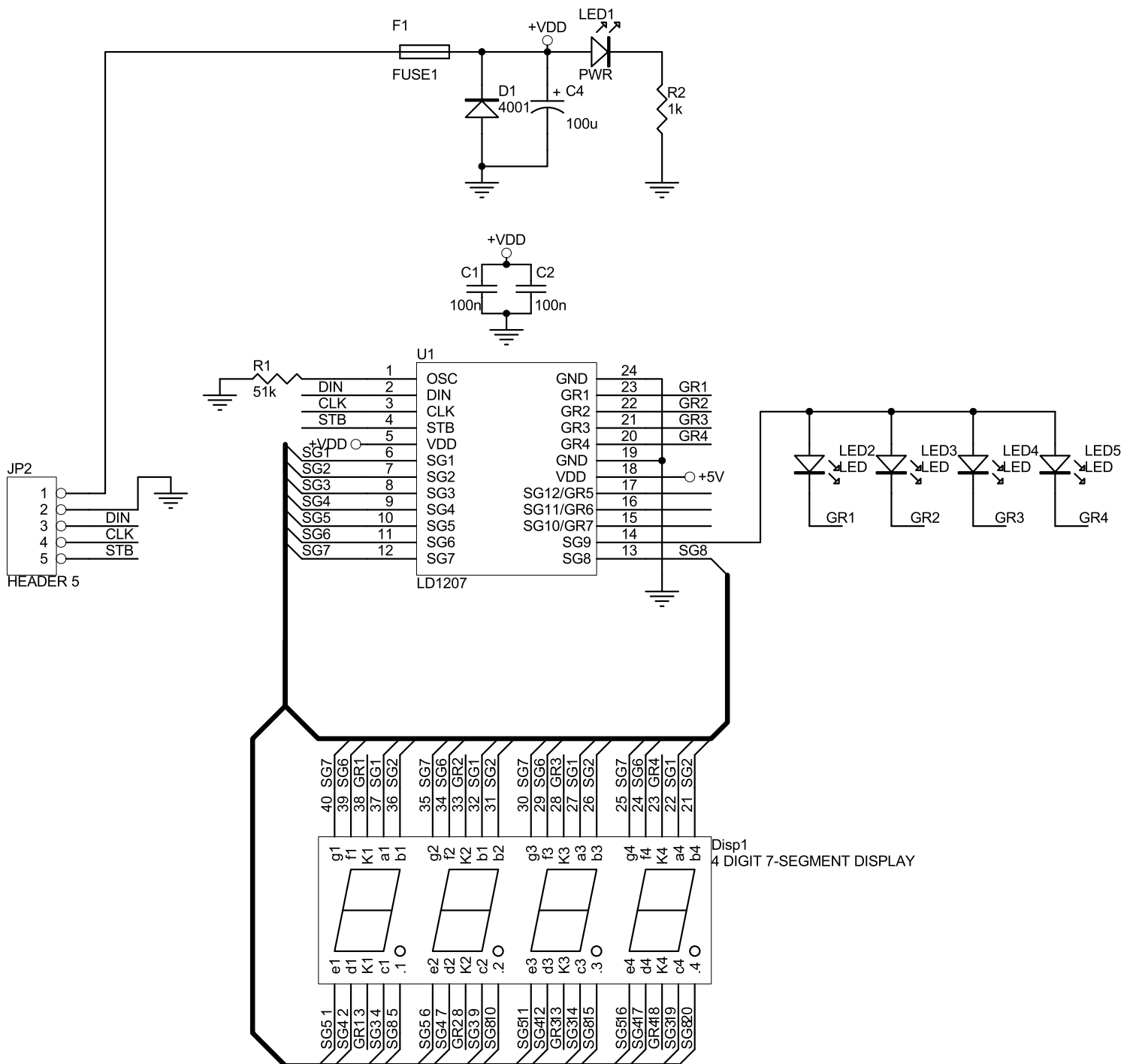


Figure 3. 4 Digits Display version 2.0
Schematic Diagram



PCB BOARD PRESENTATION

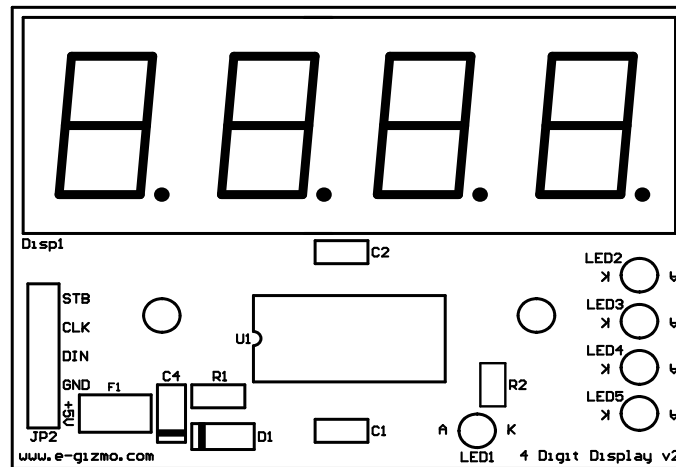


Figure 4. 4 Digits Display v2.0
(silkscreen layout)

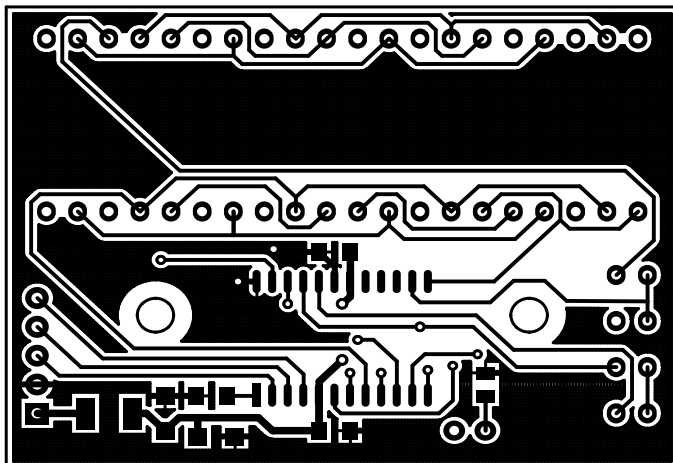


Figure 5. 4 Digits Display v2.0
PCB Copper Pattern
(Top Layer)

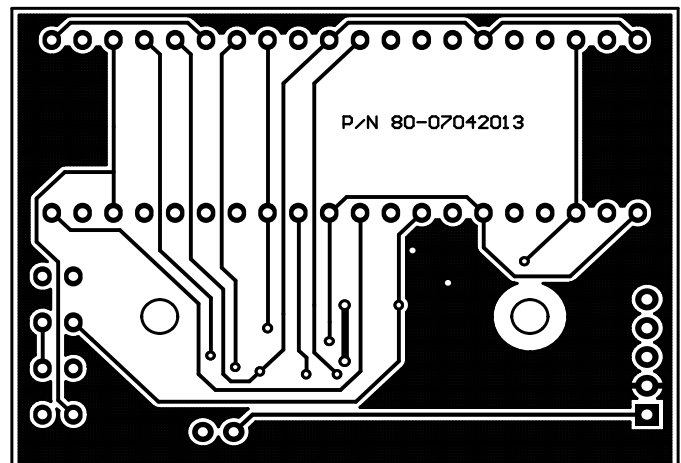


Figure 6. 4 Digits Display v2.0
PCB Copper Pattern
(Bottom Layer)



SAMPLE APPLICATIONS

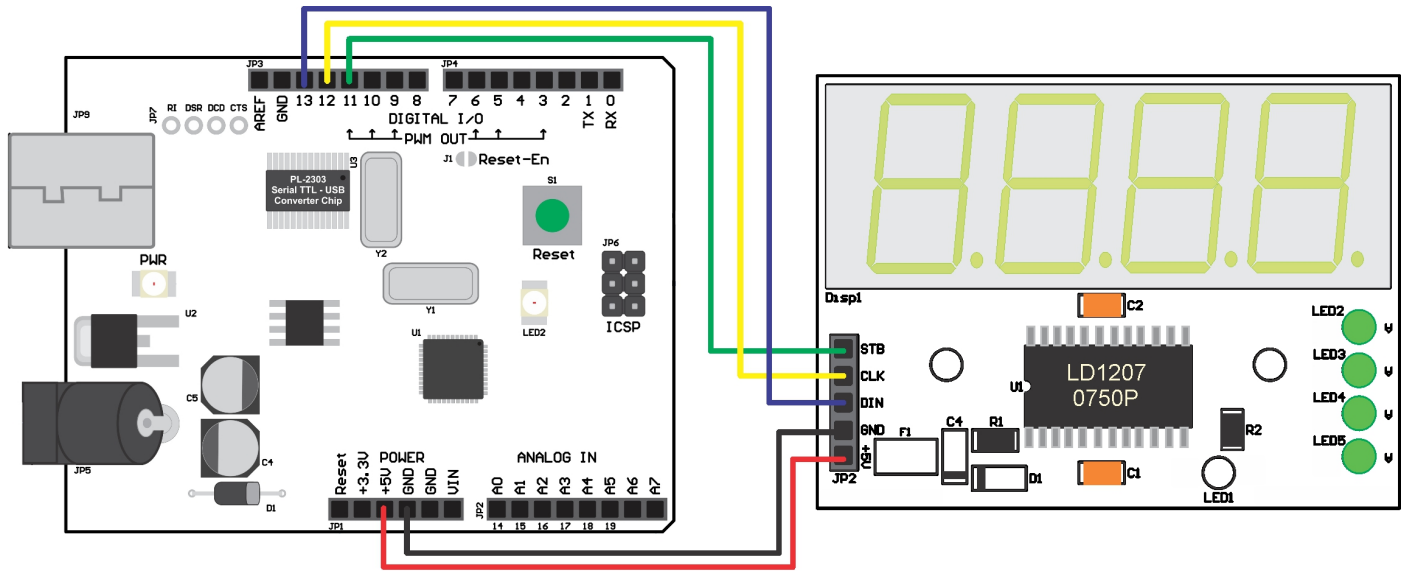


Figure 7. Application Sample for 4 Digits Display v2.0 with the Gizduino.

CONNECTIONS:

MCU	4 DIGITS DISPLAY V2
Pin 11	STB
Pin 12	CLK
Pin 13	DIN
GND	GND
+5V	+5V (VCC)