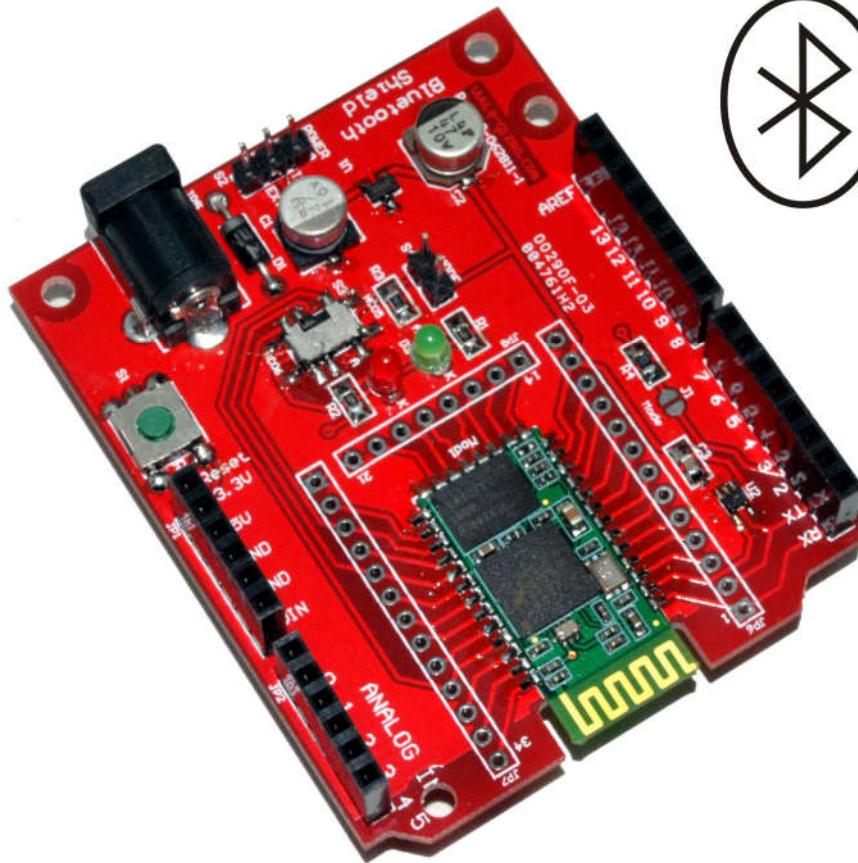


Bluetooth Shield

(Master & Slave)



Employing our latest EGBT-04 series low cost bluetooth module, the Bluetooth shield is likewise available in two low cost versions: Slave only functions and Master and Slave functions. Class 2 Bluetooth shield with SPP profile functioning as UART port wireless cable replacement.

FEATURES

- EGBT-04MS Bluetooth module (for Master)
EGBT-04S Bluetooth module (for Slave)
- Extension port of the on-board Bluetooth module for future interfacing.
- External power supply (8-12V)
- Arduino Default power input (5V)
- Mode Switch Master or Slave (for Master only)

MAJOR COMPONENTS PRESENTATION

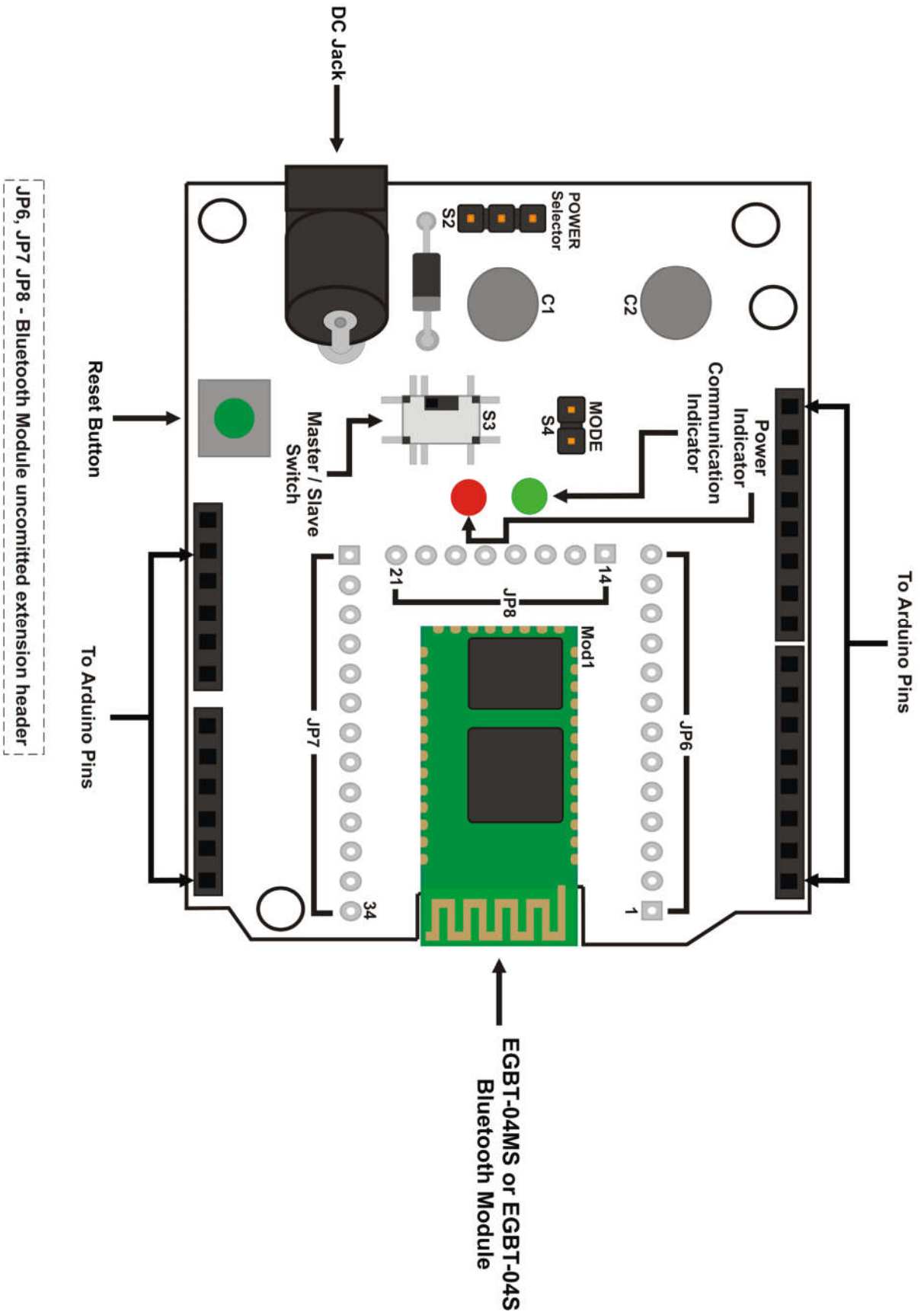


Figure 1. Bluetooth Shield (Master or Slave) & its major components with details

MODULE EXTENSION PIN ASSIGNMENTS

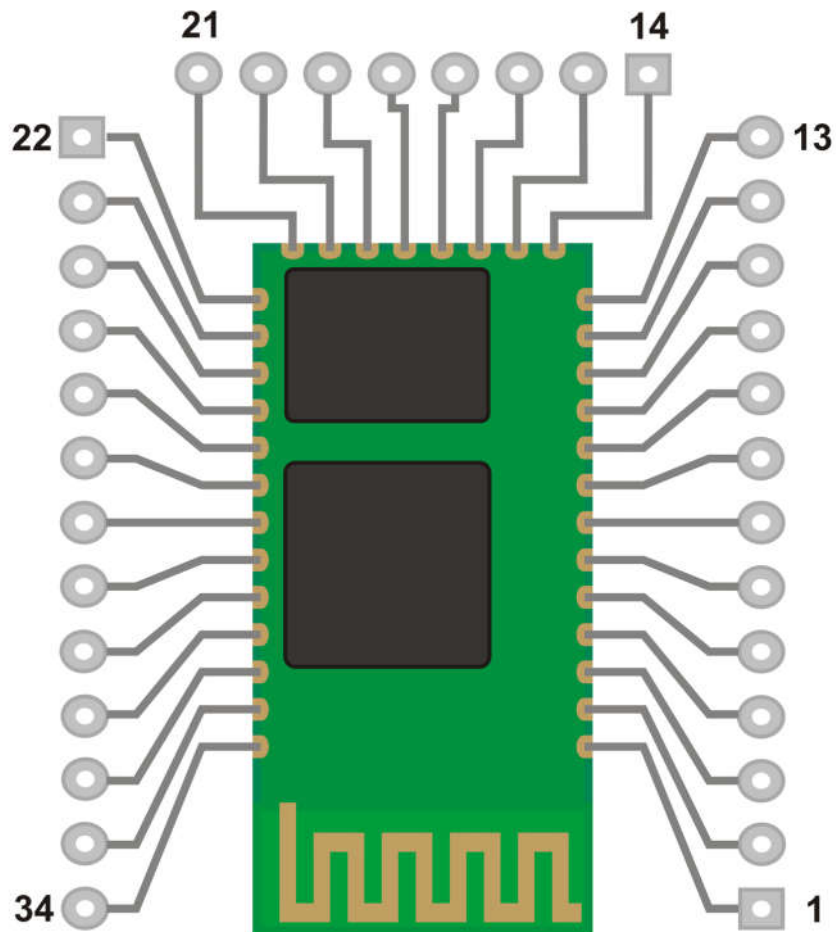


Figure 2. Bluetooth Module (Master or Slave) Extension Port

For detailed module specifications, AT commands reference, and interfacing bluetooth module with micro-controllers and PC com ports, visit (www.e-gizmo.com).

SCHEMATIC DIAGRAM

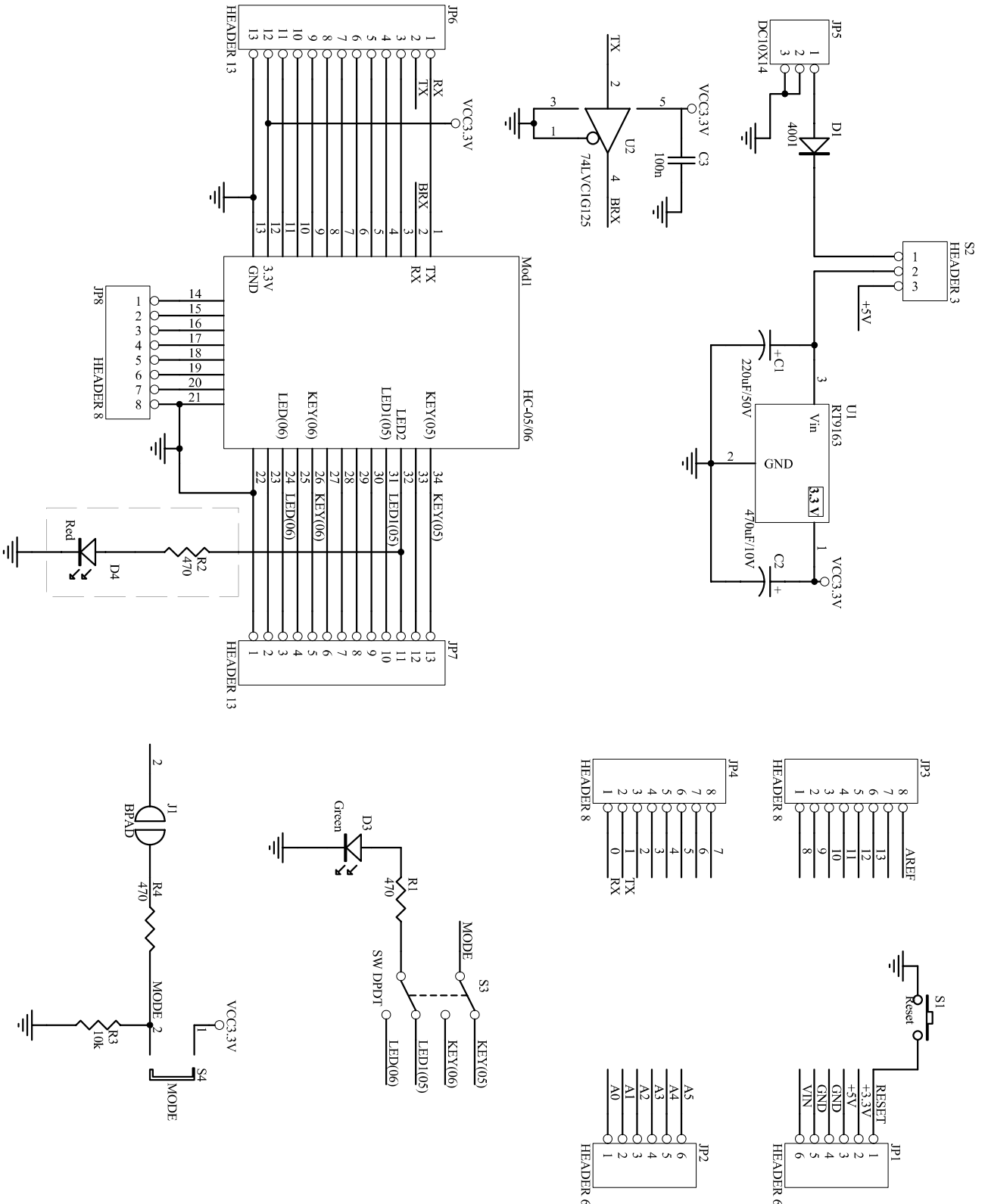


Figure 3. Schematic Diagram of Bluetooth Shield

PCB BOARD PRESENTATION

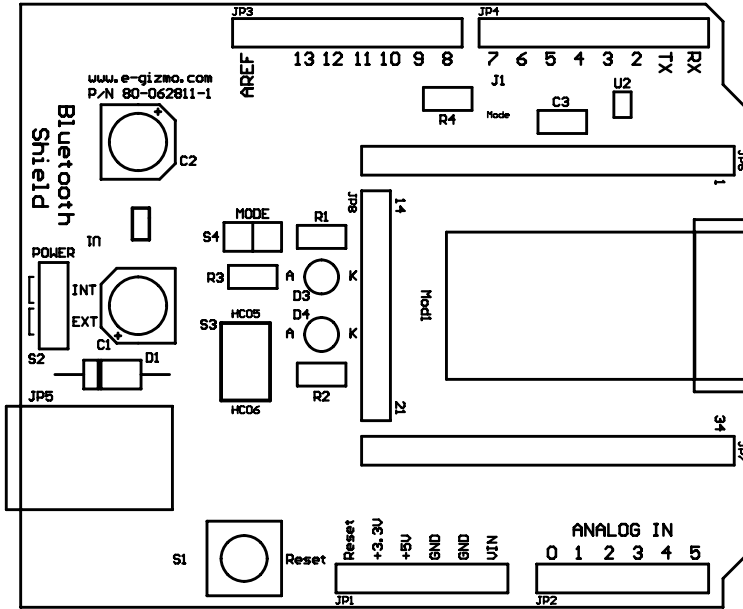


Figure 4. Bluetooth Shield PCB
(silkscreen layout)

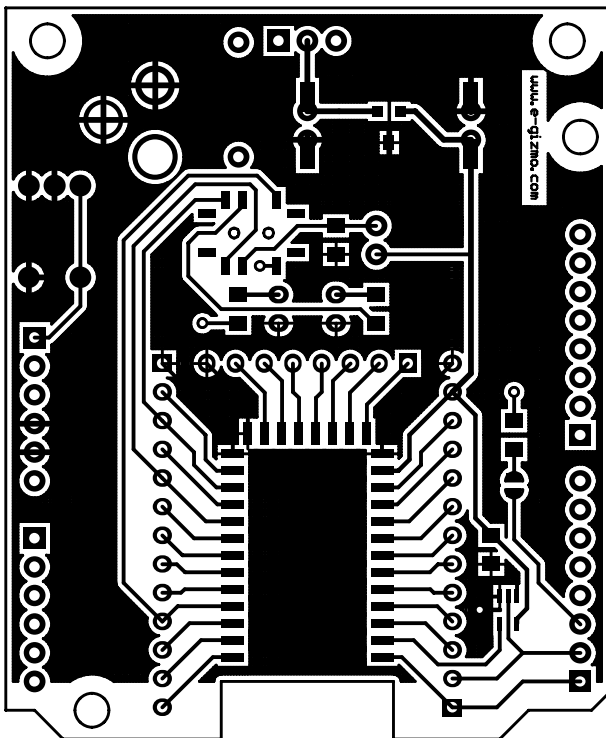


Figure 5. Bluetooth Shield PCB
Copper Pattern (Top Layer)

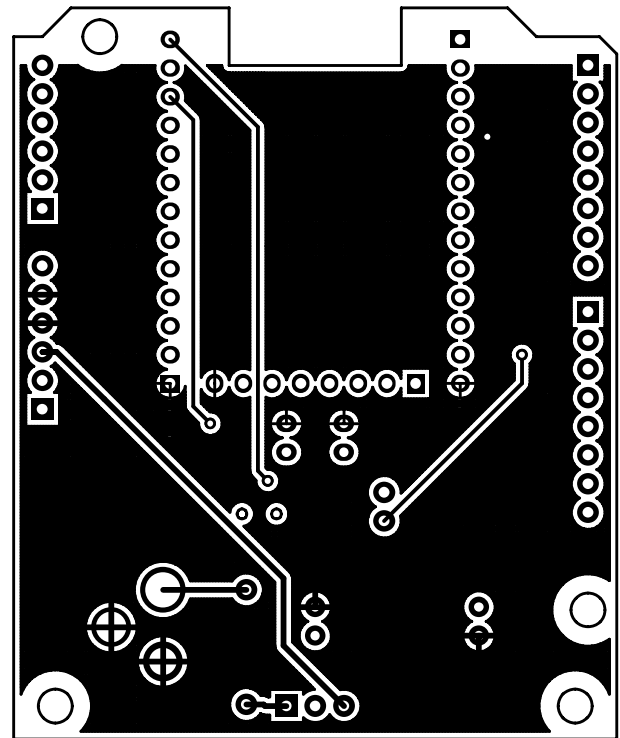


Figure 6. Bluetooth Shield PCB
Copper Pattern (Bottom Layer)